



Bradford Teaching Hospitals  
NHS Foundation Trust



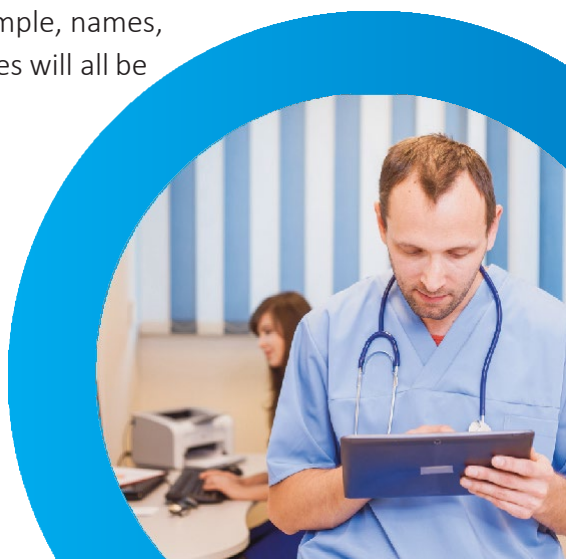
**CONNECTED  
YORKSHIRE**

# The Big Picture

The NHS wants every patient to get the best care possible. At Connected Yorkshire our aim is to understand the 'big picture' of how we look after patients receiving care from different services such as GP practices, hospitals, the ambulance service and the council so we can find out what will work best to prevent and treat medical conditions for all patients.

All the organisations that care for patients record information about them. At the moment, this information is not joined up. If we want to find out how well we look after patients, we need to link data from the different places that care for patients. Connected Yorkshire will link patient information from different places, including GP practices.

Patient confidentiality and privacy is fundamental to what we are doing, and for that reason Connected Yorkshire will not have access to any information that can identify an individual person. For example, names, dates of birth and addresses will all be removed from the patient information before it is made available to the Connected Yorkshire project.



# Connected Yorkshire

## Case study: How Connected Yorkshire can help empower independence in older people

Many older people are affected by frailty which can occur naturally as part of the ageing process, but as a result of becoming frail older people are at an increased risk of falls, disability, and hospitalisation. Usually, help from the health service only comes once the frailty is so severe that a person cannot manage and a crisis happens, like a fall or dehydration. By linking together information across Bradford, Connected Yorkshire will be able to better plan and coordinate services for frail elderly patients. The aim is to provide the right care at the right time. This will keep people as well as possible and as independent as possible, instead of waiting for a medical crisis to happen.



# Linking Organisations

Connected Yorkshire will link anonymous information across different health and social care organisations. How will this make patient care better?

- A better understanding of the health needs of the people of Bradford, including understanding which groups of people need extra support.
- That understanding will be used to improve the ways we deliver care, so that each patient gets the care that is best for them, at the right time.
- Improvements in care will reach patients more quickly.
- When changes are made we can check whether they have helped patients and then make further improvements.
- Care for patients will be joined up, so that learning is shared and patients get good care in all parts of the health service, not just not just some parts.



# FAQs

**What information will Connected Yorkshire use?** Connected Yorkshire will use information recorded on computer systems by organisations involved in providing health and social care, for example, medical conditions and treatments. Any details that can identify an individual person will be removed before the information is made available to the Connected Yorkshire project.

**Who will access my records?**

The records will be available to Connected Yorkshire researchers, as well as some other organisations involved in providing healthcare and health research. Access to the records will only be given to those individuals or organisations approved by an independent panel.

**How will the information be used?**

The linked information from GP practices as well as other healthcare organisations will be used to improve the way patient care is delivered. GP practices may contact you to inform of treatments and care that improve your healthcare.

**Will this change my medical records?**

**No.** This will not change or affect your medical records.

# Access to information

If you do not wish Connected Yorkshire to have access to your information, then please contact your GP Practice Manager, who will ensure that no information is available to the project.

## For more information

<https://www.bradfordresearch.nhs.uk/our-research-teams/connected-bradford/>

